



Air Stroke



CE 1433

AirStroke

AirStroke - Three-axis pneumatic platform also known as an access lift or painting lift. A device in the G-Lift offer that performs up/down, in/out and longitudinal movement designed to operate in large painting chambers. This functionality allows for a significant increase in productivity for operations such as: repair and maintenance service, surface preparation or painting.

AirStroke platforms are wall-mounted, what allows to keep the floor clean and provides easy access to the floor surfaces.

Fully pneumatic control is a simple and reliable solution for the safe use of the device in potentially explosive atmospheres (ATEX Zone 2 Cat. 3 GD T6).

Features:

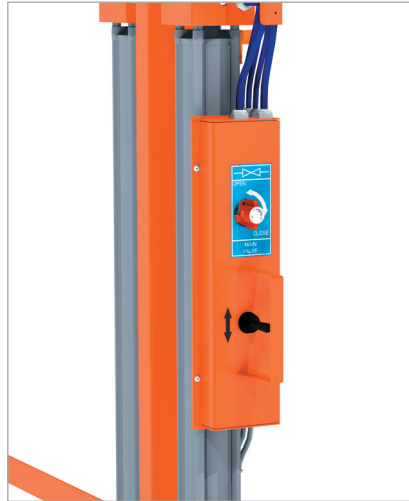
- Increased productivity;
- Higher quality of painted surfaces;
- Lower production costs;
- Low operational costs;
- Short return on investment;
- Long service life;
- Improved safety at work;
- Easy to keep clean;
- Intuitive control;
- 3-axis movement;
- Compliant with CE and ATEX standards;
- Certificated by Notified Body no. 1433.

Components used in the production of **AirStroke** platforms come from the leading manufacturers operating on the world markets.





Overload protection system and chain tension control unit.



Control panel accessible from the floor level. Enables the platform's cage to be lifted during service work in the painting chambers.



Optional pedal control.



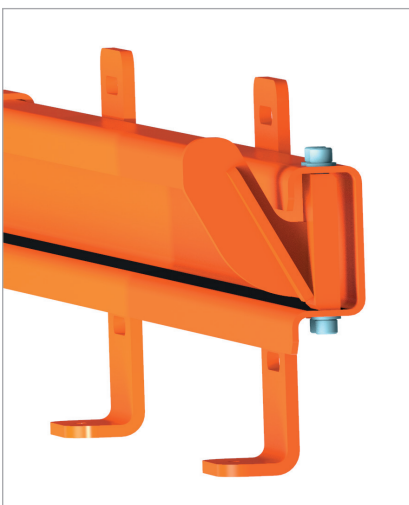
Intuitive control panel with compressed air connections for hand tools.



Doors equipped with self-closing hinges and snap lock.



Safety harness attachment point.



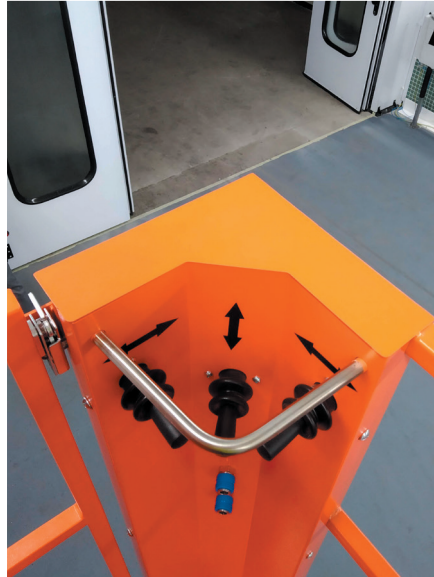
Open rail profile made of high-strength steel prevents the accumulation of dirt.



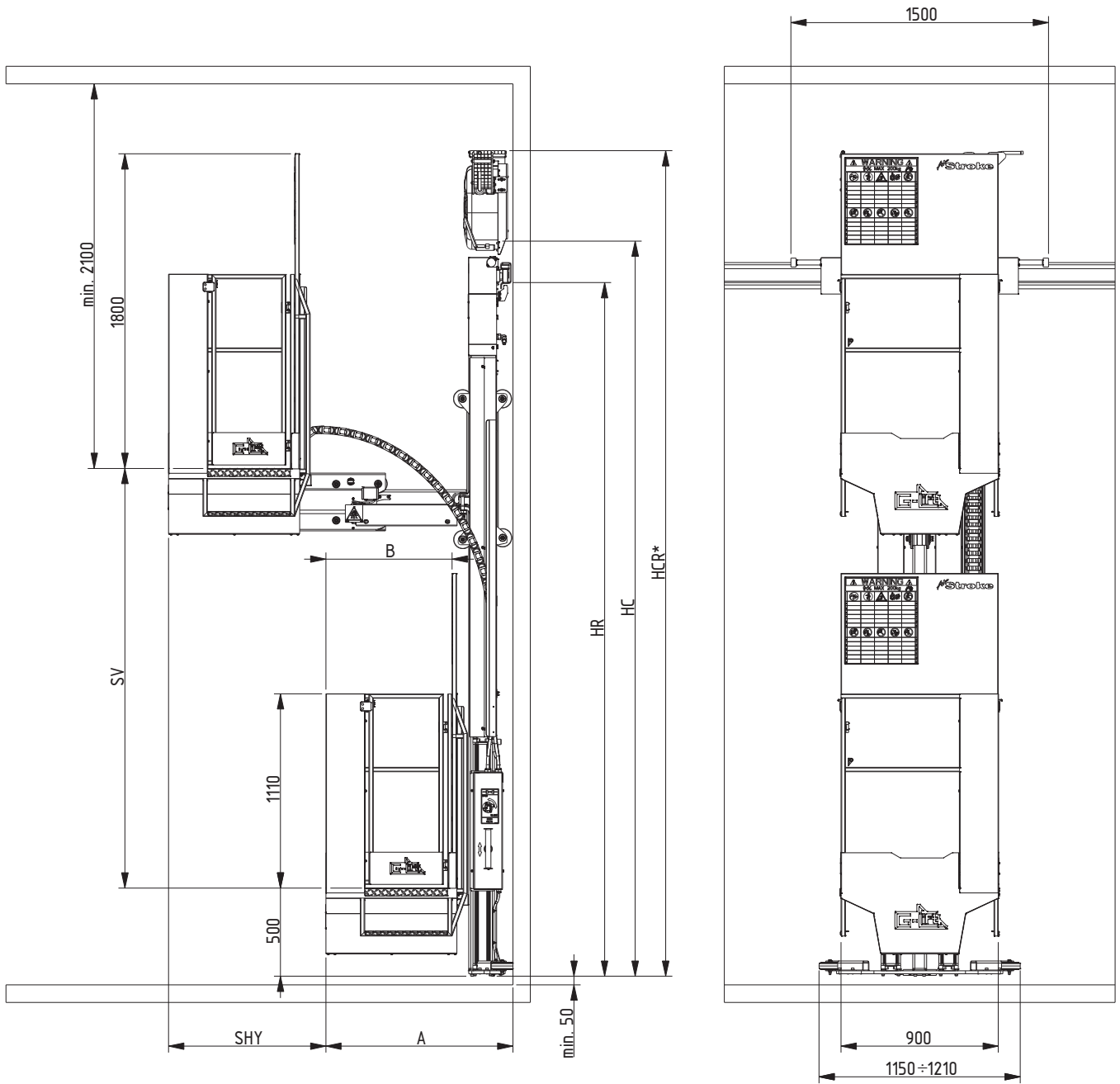
Shock absorbers provide a smooth stop in case of a collision with the end of the track or the second platform.



An optional front door in the cage allows access to the upper surfaces of painted objects.



DIMENSIONAL DRAWING



	SV	SHY	HR	HC	HCR*	A	B
AirStroke MINI	2000÷6000	600	SV+1600	SV+1800	SV+2300	930	600
AirStroke MIDI	2000÷6000	900	SV+1600	SV+1800	SV+2300	1080	750
AirStroke MAXI	2000÷6000	1200	SV+1600	SV+1800	SV+2300	1230	900
AirStroke MAXI XXL	2000÷6000	1600	SV+1600	SV+1800	SV+2300	1430	1100

Other dimensions on request.

TECHNICAL SPECIFICATION

INSTALLATION METHOD	on the wall without contact with the floor
MOVEMENT RANGES:	
VERTICAL	up to 7500 mm
ALONG THE WALL	up to 30 m, max. depending on the compressed air supply system
TELESCOPE EXTENSION	400÷1600 mm
LOAD CAPACITY	up to 10 m above the floor; up to 4 m from the wall
COLORISTICS	two-colour RAL 2004 / RAL 9005
LOAD CAPACITY	200 kg (operator + equipment)
OPERATING TEMPERATURE	up to 40 °C
TEMPERATURE RESISTANCE	up to 60 °C (optional up to 80 °C)
MOVEMENT SPEEDS:	
VERTICAL	6 m/min
ALONG THE WALL	30 m/min
TELESCOPE EXTENSION	6 m/min
CONTROLS	inside the cage: up/down; right/left; in/out optional foot pedals control at ground level: up/down; in/out (optional)
POWER SUPPLY:	
COMPRESSED AIR	6÷7 bars ISO 8573-1:2010 min [6:4:4]
CONSUMPTION	600 l/min
CONNECTION	2000 l/min (platform with tools)
BRAKE	acting on the top rail acting on lower support wheels (as an option)

G-LIFT SP. Z O.O.

st. Rembrandta 4A /39, 03-531 Warsaw, Poland | +48 22 838 76 59 | info@glift.eu

For more information please visit our website: www.glift.eu



glift.eu